

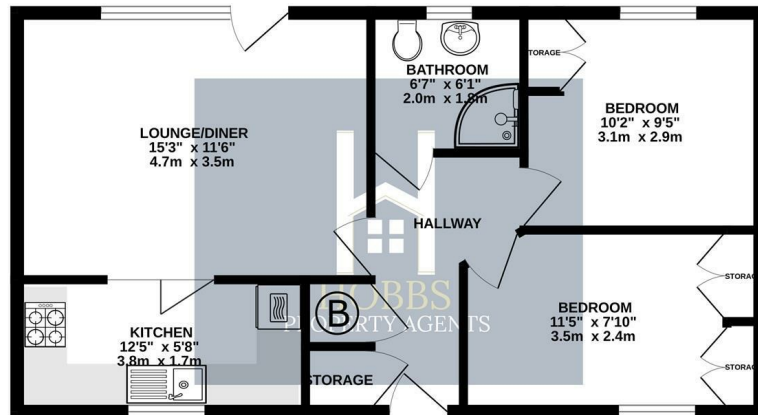


£250,000

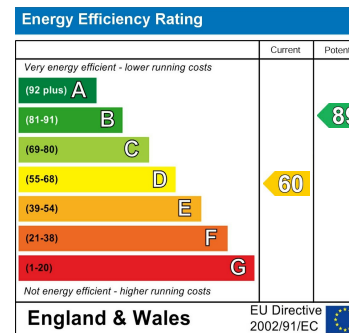
Batten Court

Bristol, BS37 6BL

GROUND FLOOR
553 sq.ft. (51.3 sq.m.) approx.



TOTAL FLOOR AREA: 553 sq.ft. (51.3 sq.m.) approx.
Whilst every attempt has been made to ensure the accuracy of the floorplan contained here, measurements of doors, windows, rooms and any other items are approximate and no responsibility is taken for any error, omission or misstatement. This plan is for illustrative purposes only and should be used as such by any prospective purchaser. The services, systems and appliances shown have not been tested and no guarantee as to their operability or efficiency can be given.
Made with Metagix 02/20



Agents Note: Whilst every care has been taken to prepare these particulars, they are for guidance purposes only. All measurements are approximate and are for general guidance purposes only and whilst every care has been taken to ensure their accuracy, they should not be relied upon and potential buyers/tenants are advised to recheck the measurements



OFFICE DETAILS
01454 529 024
sales@hobbspropertyagents.co.uk